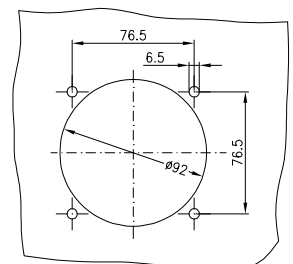
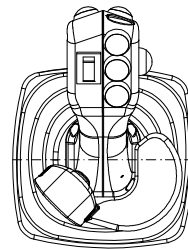
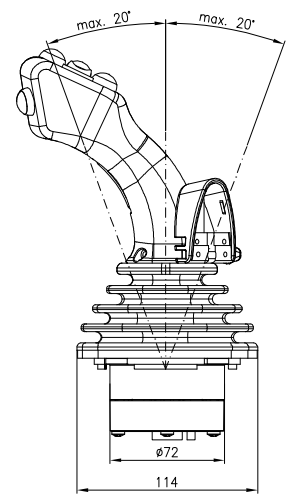
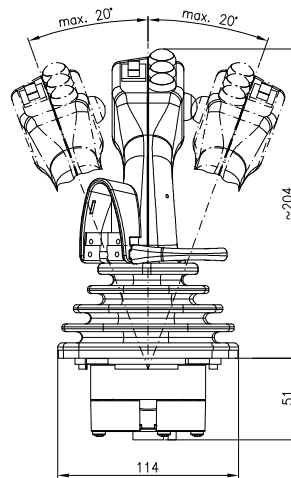
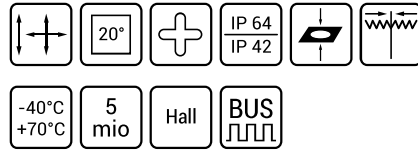


HS2

3D-Hall-Technology for highest claims.



Especially for applications with all the different bus systems, this joystick was developed. The wear-free 3D Hall sensor system allows a control system to at least 5 million cycles. In addition to a Spohn-typical stable ferromagnetic metal body, the low height and the depth of rotation are characteristics of this new joystick platform. The extremely compact design enables the use of even the smallest spaces

and consoles to realize until now not possible console designs. Various connecting links, final notchings, significant steps and a variety of handle shapes round off the range of applications. The joystick is used in particular in the agricultural and construction equipment and is easily integrated into complex control panels and systems.