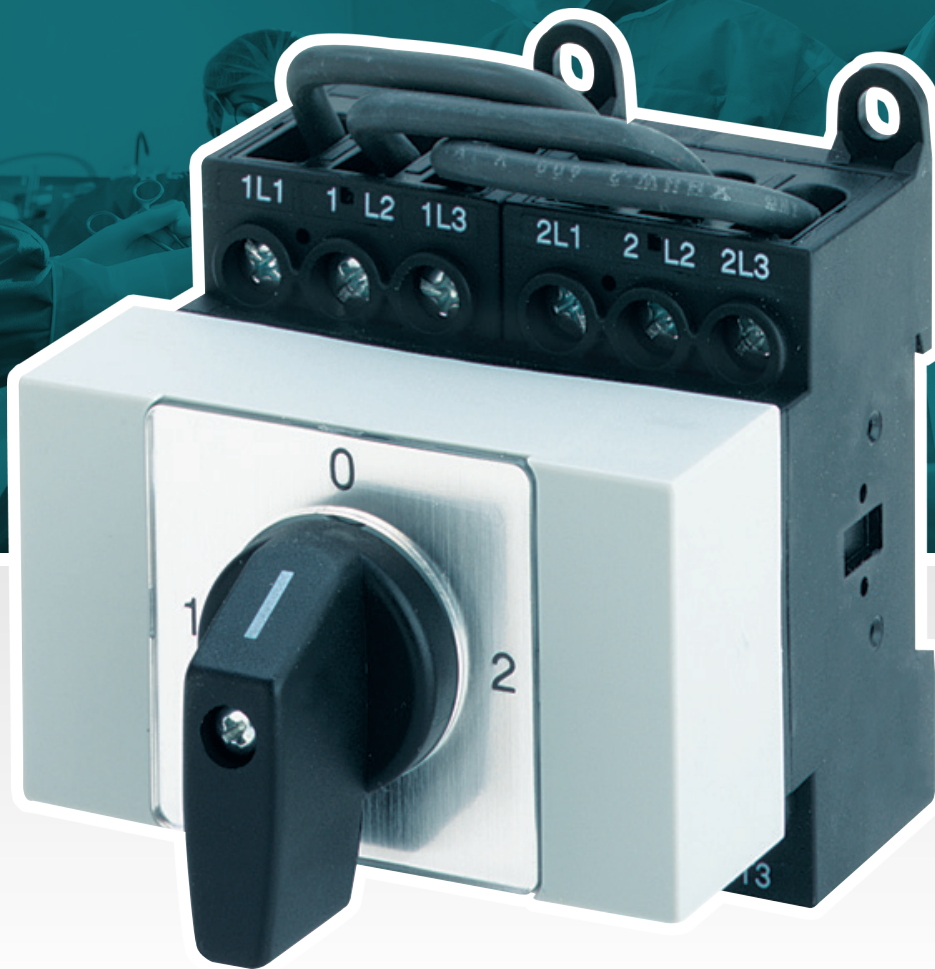


Change-Over-Switches MLS

8 SWITCHING CONTACTS / 4 POLE / 25 - 125 A



switch to Quality!

TECHNICAL DATA

MLS-Switch			025	025	040	040	063	063	080	080	100	100	125	125
			4VU3B	4VU	4VU3B	4VU	4VU3B	4VU	4VU3B	4VU	4VU3B	4VU	4VU3B	4VU
Bridge N-Modul			no	yes	no	yes	no	yes	no	yes	no	yes	no	yes
Operational voltage U_e	V AC		690	690	690	690	690	690	690	690	690	690	690	690
Impulse withstand voltage U_{imp}	kV		6	6	6	6	6	6	8	8	8	8	8	8
Uninterrupted current $I_u / I_{th} / I_{the}$	A		25	25	40	40	63	63	80	80	100	100	125	125
Short-circuit rating Max. fuse	gL		25	25	40	40	63	63	80	80	100	100	125	125
Conditional short-circuit current	kA _{eff}		15	15	15	15	-	-	25	25	25	25	25	25
Short-circuit making capacity I_{cm}	kA		-	-	-	-	1,8	1,8	-	-	-	-	-	-
Isolation characteristics acc. to EN 60947	up to ...	V AC	690	690	690	690	690	690	1000	1000	1000	1000	1000	1000
Switching angle			90°	90°	90°	90°	90°	90°	90°	90°	90°	90°	90°	90°
Contacts (current paths)	max		8	8	8	8	8	8	8	8	8	8	8	8
Terminal capacity														
- solid or	min	mm ²	1	1	1	1	6	6	4	4	4	4	4	4
- stranded	max	mm ²	10	10	10	10	25	25	50	50	50	50	50	50
- flexible or multiwired	min	mm ²	0,75	0,75	0,75	0,75	4	4	2,5	2,5	2,5	2,5	2,5	2,5
- including ferrule	max	mm ²	6	6	6	6	16	16	35	35	35	35	35	35
American Wire Gauge	AWG		8	8	8	8	4	4	1/0	1/0	1/0	1/0	1/0	1/0
Operation current I_e														
- AC-21A	A		25	25	40	40	63	63	80	80	100	100	125	125
- cUL	300V AC	A	25	25	40	40	63	63	80	80	100	100	100	100
- General Use	600V AC	A	25	25	40	40	63	63	80	80	100	100	100	100
Operational power at 50-60Hz (3 phases)														
AC-23A	220-240V	kW	4	4	7,5	7,5	15	15	18,5	18,5	22	22	30	30
	380-440V	kW	7,5	7,5	15	15	22	22	30	30	37	37	45	45
	500V	kW	7,5	7,5	15	15	22	22	30	30	37	37	45	45
	660-690V	kW	7,5	7,5	15	15	22	22	30	30	37	37	45	45
AC-3	220-240V	kW	3	3	5,5	5,5	11	11	15	15	22	22	30	30
	380-440V	kW	5,5	5,5	11	11	18,5	18,5	22	22	30	30	37	37
	500V	kW	5,5	5,5	11	11	18,5	18,5	30	30	37	37	45	45
	660-690V	kW	5,5	5,5	11	11	18,5	18,5	22	22	30	30	37	37
cUL	110-120V ACHP		1,5	1,5	3	3	5	5	7,5	7,5	10	10	15	15
	208V AC HP		3	3	7,5	7,5	-	-	10	10	15	15	-	-
	220-240V ACHP		3	3	7,5	7,5	10	10	20	20	25	25	30	30
	440-480V ACHP		5	5	15	15	20	20	30	30	30	30	60	60
	550-600V ACHP		5	5	15	15	20	20	30	30	30	30	50	50

Application:

Distribution board mounting on DIN rail standard 35 mm with cover plate 45 mm aperture, Handle/front plate black/silver

Mechanical lifespan: >10⁵ switching cycle

Climatic resistance: damp heat, constant, to DIN IEC 60068-2-78 / damp heat, cyclic, to DIN IEC 60068-2-30

Ambient temperature: open: -25/+50 °C. (min/max) / enclosed: -25/+40 °C. (min/max)

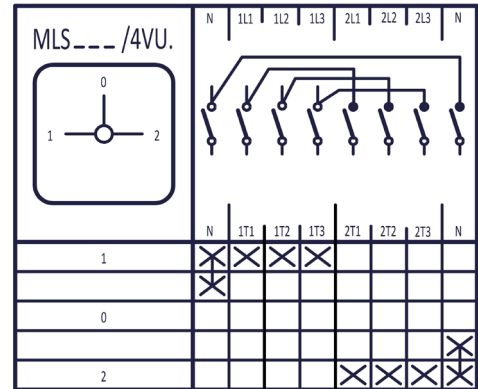
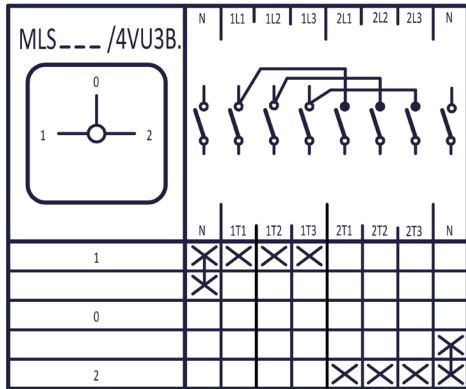
Load carrying capacity in intermittent operation, Class 12 AB: 60%/40%/25% DF: 1.3/1.6/2 × I_e

Disconnect Switch, Product line MLS 4pole Changeover switch with OFF Base mounting switch

DIN rail with cover plate 45 mm aperture, Mounting form/operator module grey, Legend plate silver, M-handle black

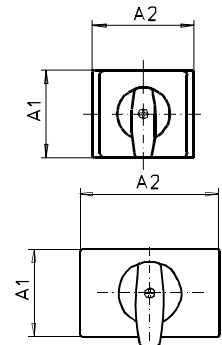
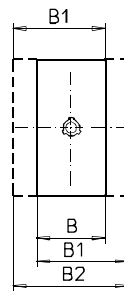
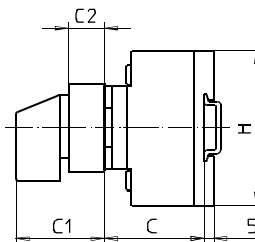
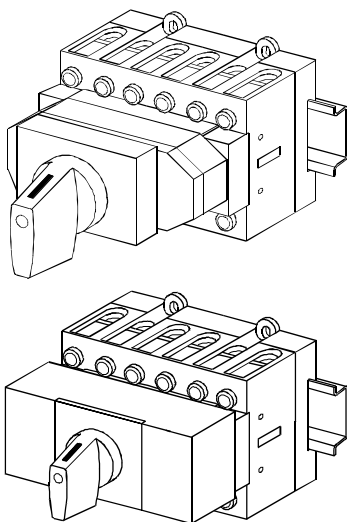
Standards IEC 60947, EN 60947, IEC 60204, EN 60204, ANSI/UL 60947-1, ANSI/UL 60947-4-1A

SWITCHING PROGRAM



DIMENSIONS (MM/INCH)

Type	N-Bridge	A1		A2		B		B1		B2		C		C1		C2		H	
		mm	inch	mm	inch	mm	inch	mm	inch	mm	inch	mm	inch	mm	inch	mm	inch	mm	inch
MLS-025	yes	45	1,77	76	2,99	72	2,83	84	3,31	96	3,78	40	1,57	51,5	2,03	25,5	1,0	70	2,76
MLS-025	no	45	1,77	76	2,99	72	2,83	84	3,31	96	3,78	40	1,57	51,5	2,03	25,5	1,0	70	2,76
MLS-040	yes	45	1,77	76	2,99	72	2,83	84	3,31	96	3,78	40	1,57	51,5	2,03	25,5	1,0	70	2,76
MLS-040	no	45	1,77	76	2,99	72	2,83	84	3,31	96	3,78	40	1,57	51,5	2,03	25,5	1,0	70	2,76
MLS-063	yes	45	1,77	105	4,13	100	3,94	119	4,69	138	5,43	40	1,57	51,5	2,03	25,5	1,0	72	2,83
MLS-063	no	45	1,77	105	4,13	100	3,94	119	4,69	138	5,43	40	1,57	51,5	2,03	25,5	1,0	72	2,83
MLS-080	yes	45	1,77	72	2,83	140	5,51	159	6,26	178	7,01	67	2,64	48	1,89	16	0,63	80	3,15
MLS-080	no	45	1,77	72	2,83	140	5,51	159	6,26	178	7,01	67	2,64	48	1,89	16	0,63	80	3,15
MLS-100	yes	45	1,77	72	2,83	140	5,51	159	6,26	178	7,01	67	2,64	48	1,89	16	0,63	80	3,15
MLS-100	no	45	1,77	72	2,83	140	5,51	159	6,26	178	7,01	67	2,64	48	1,89	16	0,63	80	3,15
MLS-125	yes	45	1,77	72	2,83	140	5,51	159	6,26	178	7,01	67	2,64	48	1,89	16	0,63	80	3,15
MLS-125	no	45	1,77	72	2,83	140	5,51	159	6,26	178	7,01	67	2,64	48	1,89	16	0,63	80	3,15



MERZ Schaltgeräte GMBH + CO KG

Kernerstraße 15
D-74405 Gaildorf

Telefon +49 (0) 7971 252-252
Fax +49 (0) 7971 252-351

info@merz-schaltgeraete.de
www.merz-schaltgeraete.de



switch to Quality!