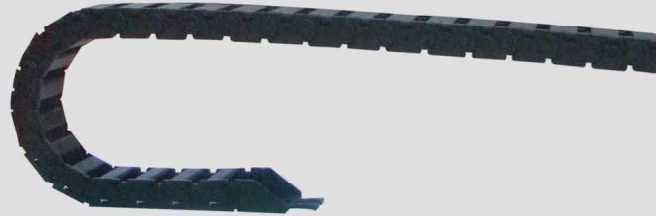




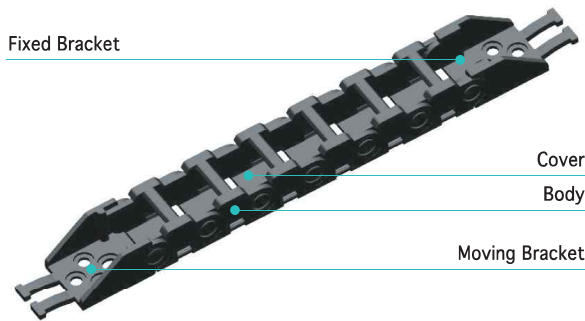
KP32

PLASTIC COVER TYPE

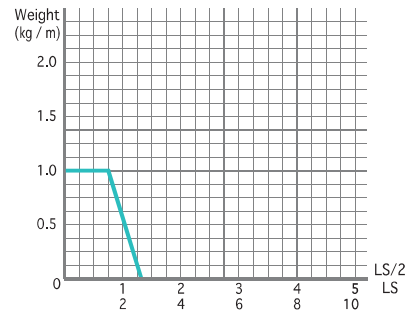
- Material : Engineering Plastic with Glass Fiber + α
- Speed : 3 m/sec
- Temperature : -25 ~ 125°C



Structure

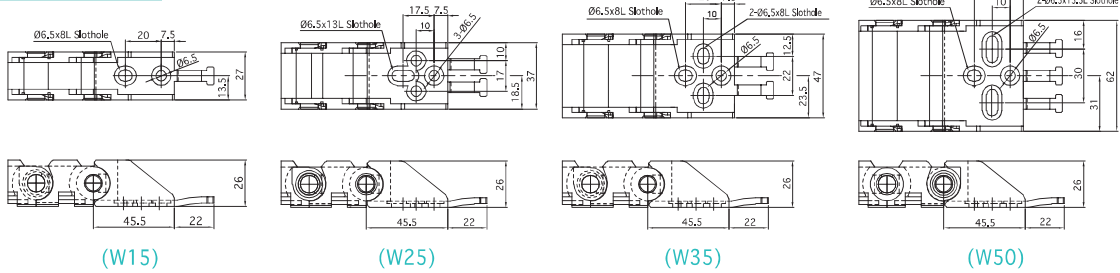


Load Diagrams Self-Supporting Length

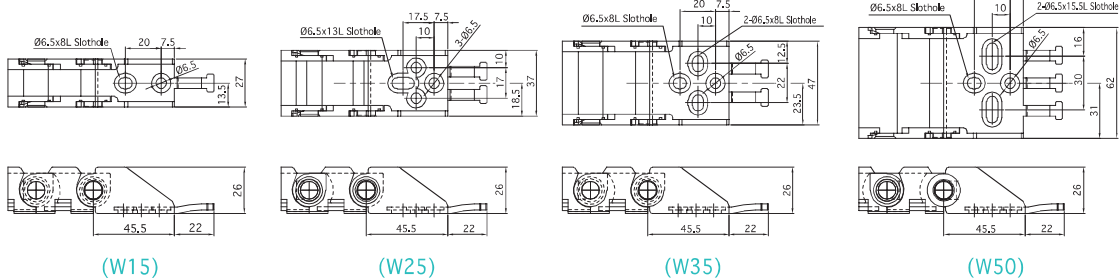


End Bracket

Fixed Bracket



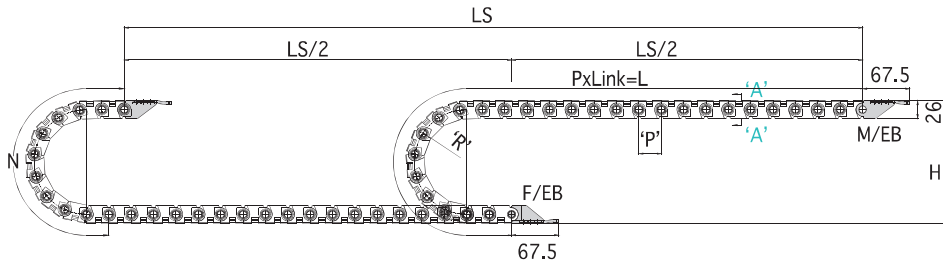
Moving Bracket



PLASTIC COVER TYPE

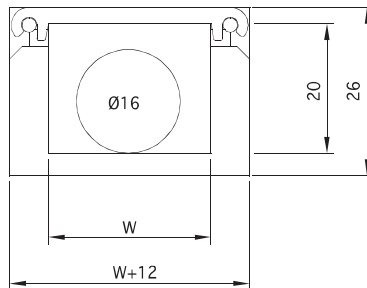
KODUCT CO., LTD.

KP32



$$\left[L = \frac{LS}{2} + N \right] \begin{array}{l} LS: \text{Total Machine Travel, } L: \text{Length, } N: \text{Safety Length} + \pi r, \\ H: \text{Height, } P: \text{Pitch, } M/EB: \text{Moving End Bracket, } F/EB: \text{Fixed End Bracket} \end{array}$$

Section A-A



Specification

TYPE	W mm(inch)	Radius mm(inch)	Pitch mm(inch)	Height mm(inch)	N mm(inch)	1M (kg)	EB Set (kg)
KP32	15 (0.590)	28 (1.102)	32 (1.259)	82 (3.228)	215.9 (8.500)	0.351	0.026
	25 (0.984)	38 (1.496)		102 (4.015)	247.3 (9.736)	0.414	0.028
	35 (1.377)	50 (1.968)		126 (4.960)	285.0 (11.220)	0.457	0.032
	50 (1.968)	75 (2.952)		176 (6.929)	363.5 (14.311)	0.520	0.038
		100 (3.937)		226 (8.897)	442.0 (17.401)		

* 1inch = 25.4mm