



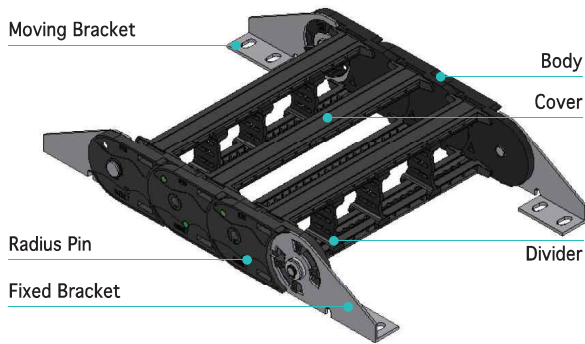
KP90

PLASTIC COVER TYPE

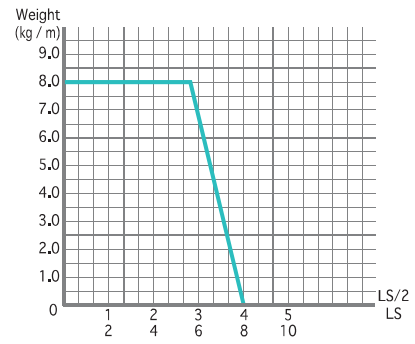
- Material : Engineering Plastic with Glass Fiber + α
- Speed : 3 m/sec
- Temperature : -25 ~ 125°C



Structure

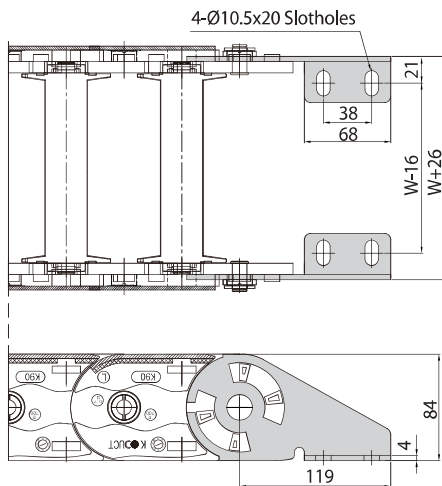


Load Diagrams Self-Supporting Length

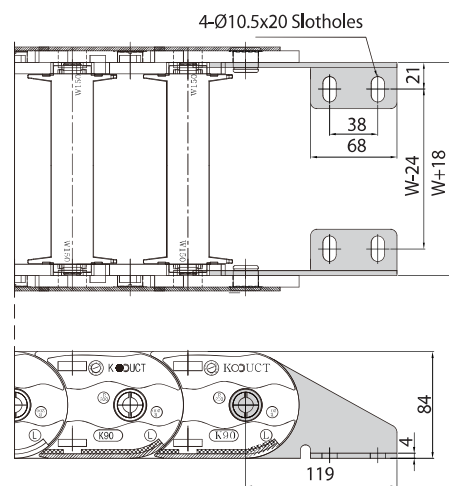


End Bracket

Fixed Bracket



Moving Bracket

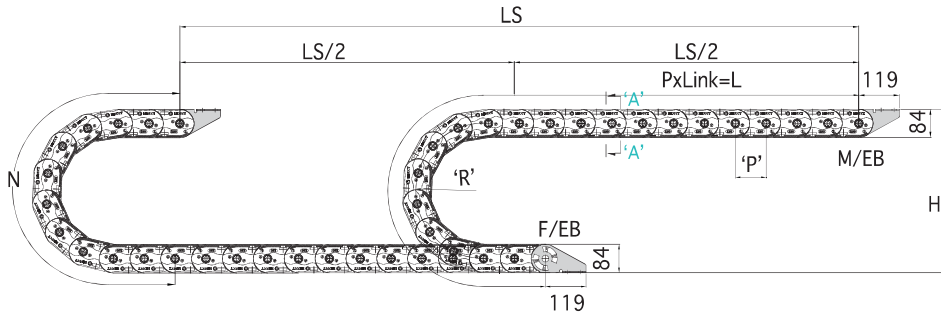




PLASTIC COVER TYPE

KODUCT CO., LTD.

KP90



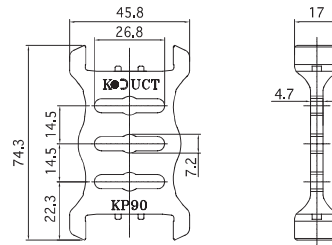
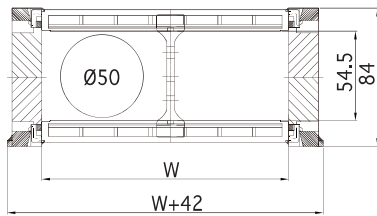
$$\left[L = \frac{LS}{2} + N \right]$$

LS: Total Machine Travel, L: Length, N: Safety Length+πr,
 H: Height, P: Pitch, M/EB: Moving End Bracket, F/EB: Fixed End Bracket

Section A-A

Divider

* Separator: Ø7(Aluminum)



Specification

TYPE	W mm(inch)	Radius mm(inch)	Pitch mm(inch)	Height mm(inch)	N mm(inch)	DVDR (ea)	1M (kg)	EB Set (kg)
KP90	150 (5.950)	150 (5.906)	91 (3.583)	384 (15.118)	835 (32.874)	2	3.799	1.160
	200 (7.874)	—		—	—	2	4.089	
	250 (9.843)	200 (7.874)		484 (19.055)	992 (39.055)	3	4.453	
	300 (11.811)	250 (9.843)		584 (22.992)	1,149 (45.236)	3	4.745	
	350 (13.779)	—		—	—	4	5.184	
	400 (15.748)	300 (11.811)		654 (26.929)	1,306 (51.417)	4	5.468	

* 1inch = 25.4mm

