



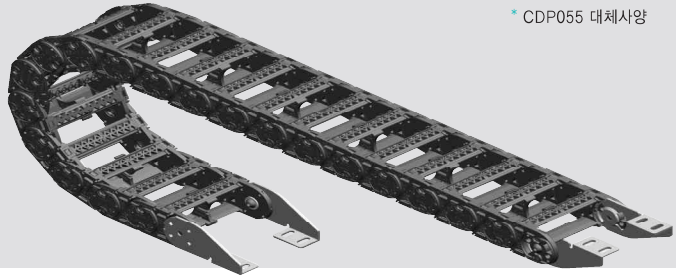
KSC588/10(25)

PLASTIC COVER TYPE

Koduct Smart Carrier

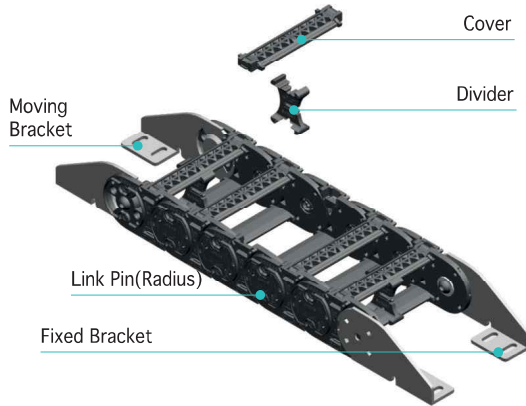
* KSC588/10 : 0~2m 미만 사용시 권장
* KSC588/20 : 2~4m 사용시 권장

- Material : Engineering Plastic with Glass Fiber + α
- Speed : 3 m/sec
- Temperature : -25 ~ 125°C

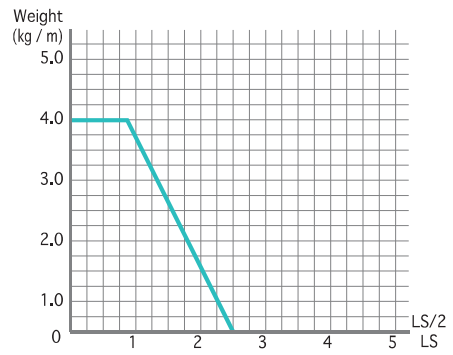


* CDP055 대체사양

Structure

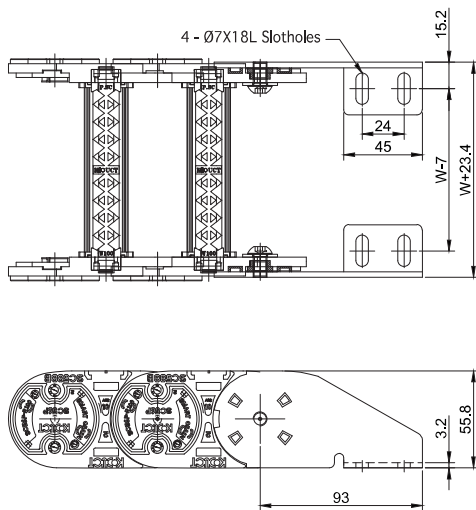


Load Diagrams Self-Supporting Length

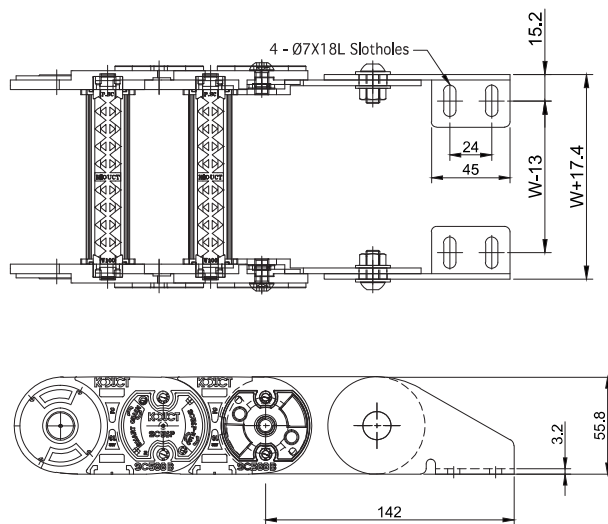


End Bracket

Fixed Bracket



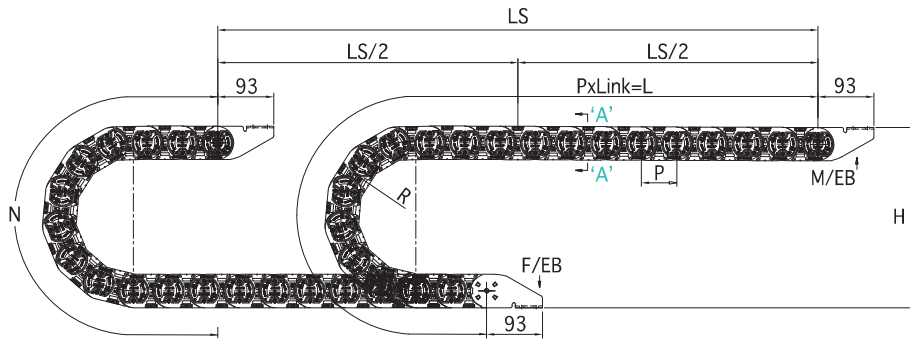
Moving Bracket



PLASTIC COVER TYPE

KODUCT CO., LTD.

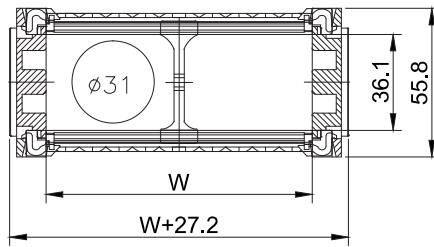
KSC588



$$L = \frac{LS}{2} + N$$

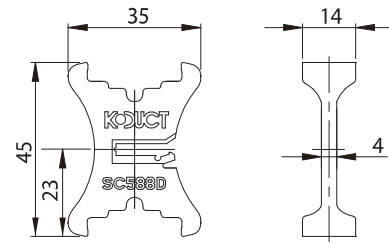
LS: Total Machine Travel, L: Length, N: Safety Length+πr,
H: Height, P: Pitch, M/EB: Moving End Bracket, F/EB: Fixed End Bracket

Section A-A



Divider

* Separator :14.5x4.4(Plastic)



Specification

TYPE	W mm(inch)	Radius mm(inch)	Pitch mm	Height mm(inch)	N mm(inch)	DVDR (ea)	1M (kg)	EB Set (kg)
KSC588/ 10(20)	50 (1.969)	68 (2.677)	58.8 (2.315)	192 (7.323)	450 (17.717)	0	1.275	0.64
	65 (2.559)					0	1.384	
	75 (2.952)	80 (3.150)		216 (8.484)	490 (19.291)	0	1.550	
	80 (3.150)					0	1.659	
	87 (3.425)	100 (3.937)		256 (10.028)	550 (21.654)	1	1.714	
	100 (3.937)					1	1.727	
	120 (4.724)	125 (4.921)		306 (11.815)	630 (24.803)	1	1.931	
	150 (5.905)					2	2.156	
	160 (6.299)	150 (5.906)		356 (14.024)	710 (27.953)	2	2.482	
	175 (6.889)					2	2.594	
187 (7.362)	200 (7.874)	456 (17.953)	870 (34.252)	2	2.758			
200 (7.874)				2	3.033			

* 1inch = 25.4mm