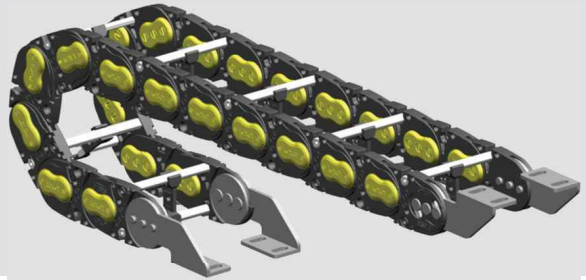


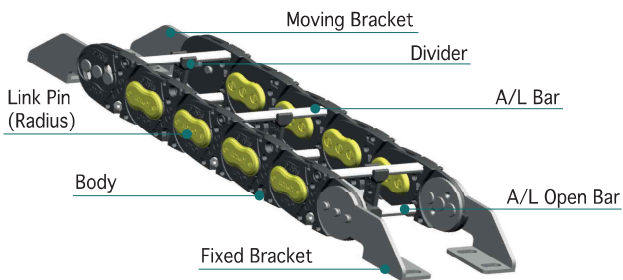
CDS070

ALUMINUM BAR TYPE

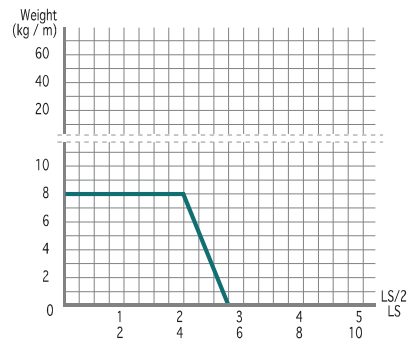
- Material : Engineering Plastic with Glass Fiber + α + Aluminum Bar
- Speed : 3 m/sec
- Temperature : -25 ~ 125°C



Structure

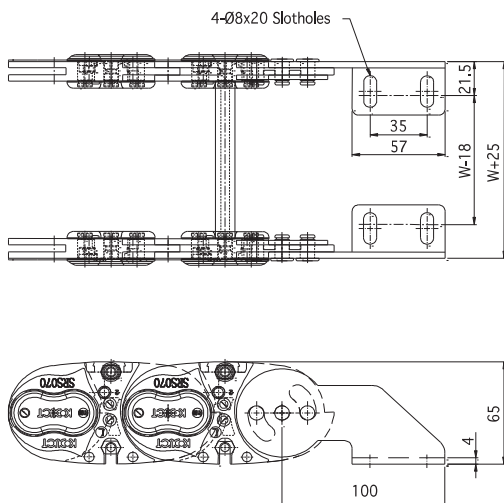


Load Diagrams Self-Supporting Length

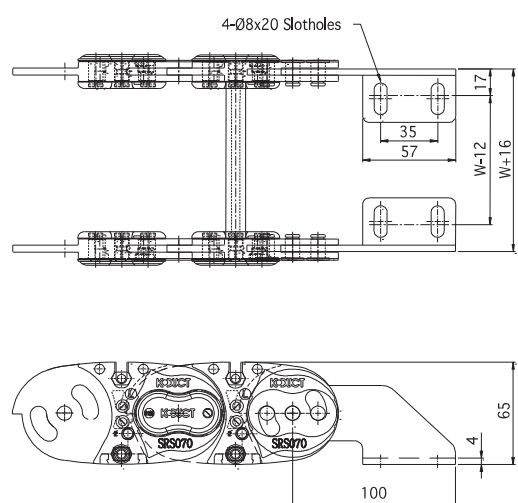


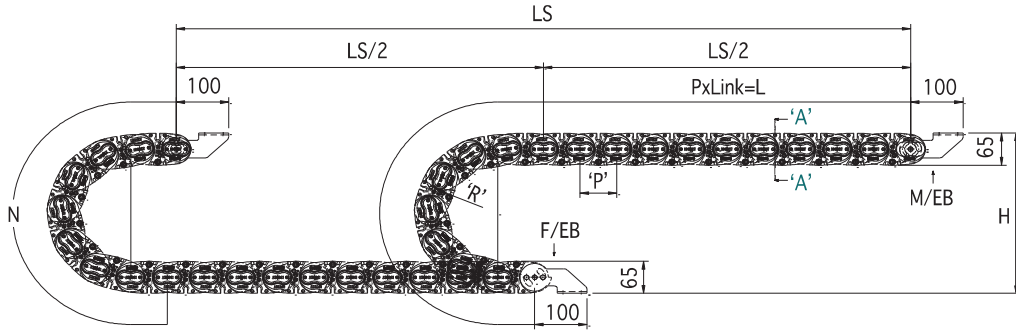
End Bracket

Fixed Bracket



Moving Bracket



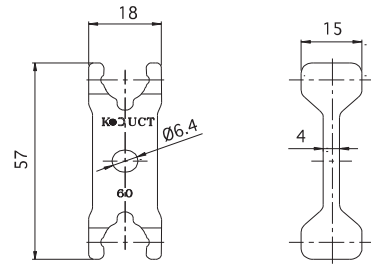
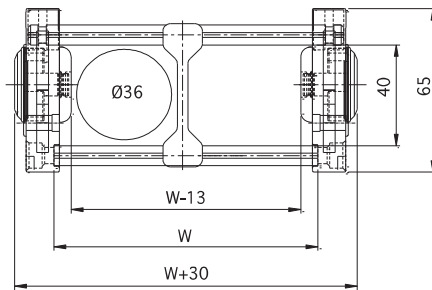


$L = \frac{LS}{2} + N$ LS: Total Machine Travel, L: Length, N: Safety Length+πr,
 H: Height, P: Pitch, M/EB: Moving End Bracket, F/EB: Fixed End Bracket

Section A-A

Divider

* Separator: Ø6(Aluminum)



Specification

TYPE	W mm(inch)	Radius mm(inch)	Pitch mm	H mm(inch)	N mm(inch)	DVDR (ea)	1M (kg)	EB Set (kg)
CDS070	80 (3.149)	75 (2.953)	70 (2.756)	215 (8.464)	800 (31.496)	1	1.991	0.982
	100 (3.937)							
	120 (4.724)	100 (3.937)		265 (10.433)	1,000 (39.370)	2	2.036	
	150 (5.905)							
	200 (7.874)	130 (5.118)		325 (12.795)	1,500 (59.055)	2	2.085	
	250 (9.843)							
	300 (11.811)	180 (7.087)		425 (16.732)	1,800 (70.866)	3	2.128	
	350 (13.779)							
400 (15.748)	230 (9.055)	525 (20.669)	2,100 (82.677)	4	2.255			

* 1inch = 25.4mm