

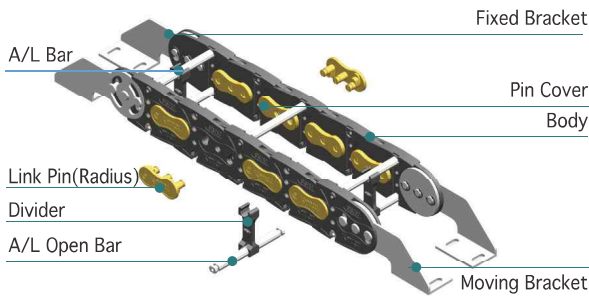
# CDS080

ALUMINUM BAR TYPE

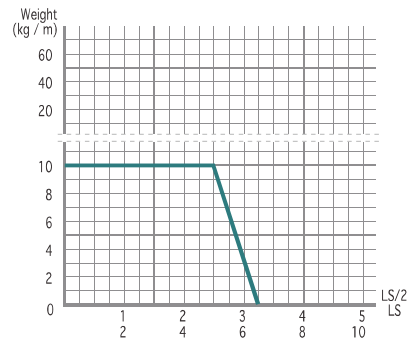
- Material : Engineering Plastic with Glass Fiber +  $\alpha$  + Aluminum Bar
- Speed : 5 m/sec
- Temperature : -25 ~ 125°C



## Structure

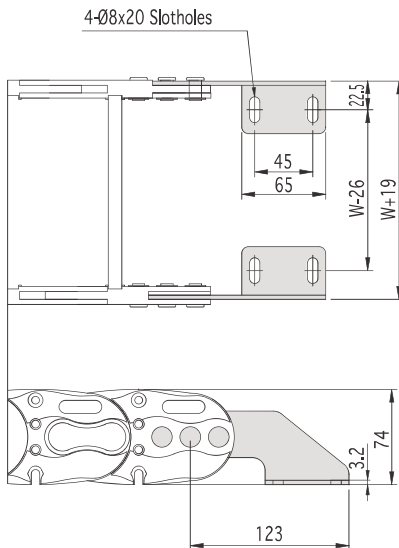


## Load Diagrams Self-Supporting Length

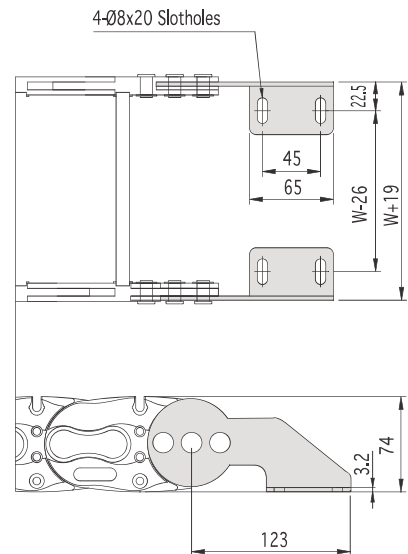


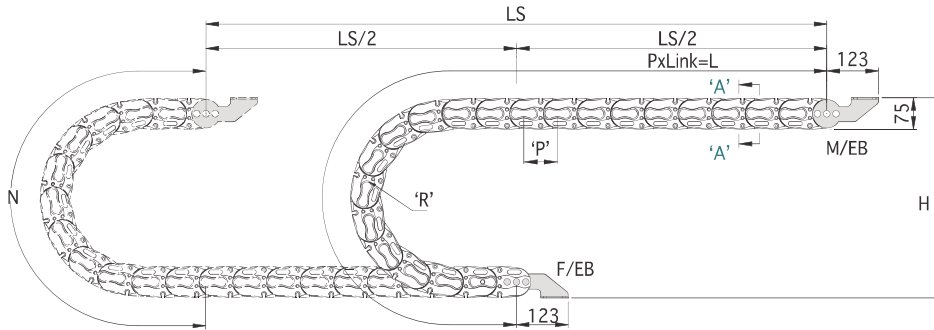
## End Bracket

### Fixed Bracket



### Moving Bracket

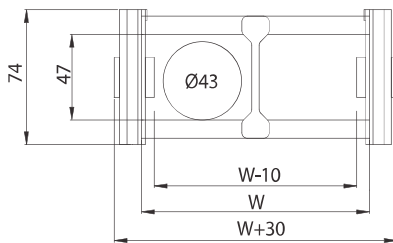




$$\left[ L = \frac{LS}{2} + N \right]$$

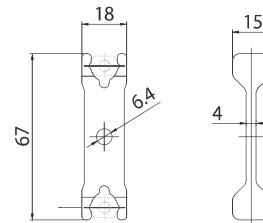
LS: Total Machine Travel, L: Length, N: Safety Length+πr,  
 H: Height, P: Pitch, M/EB: Moving End Bracket, F/EB: Fixed End Bracket

Section A-A



Divider

\* Separator : Ø6(Aluminum)



Specification

TYPE	W mm(inch)	Radius mm(inch)	Pitch mm	Height mm(inch)	N mm(inch)	DVDR (ea)	1M (kg)	EB Set (kg)
CDS080	80 (3.149)	150 (5.906)	80 (3.150)	380 (14.960)	791 (31.142)	1	2.775	1.435
	100 (3.937)	200 (7.874)		480 (18.897)	948 (37.323)	1	2.833	
	120 (4.724)	250 (9.843)		580 (22.834)	1,105 (43.504)	2	3.024	
	150 (5.905)	280 (11.024)		640 (25.196)	1,199 (42.205)	2	3.170	
	200 (7.874)	350 (13.779)		880 (34.645)	1,576 (62.047)	3	3.363	
	250 (9.843)	400 (15.748)				3	3.513	
	300 (11.811)					4	3.707	
	350 (13.779)					4	4.655	

\* Width 주문에 따라 제작가능 (Width follows in oder)

\* 1inch = 25.4mm