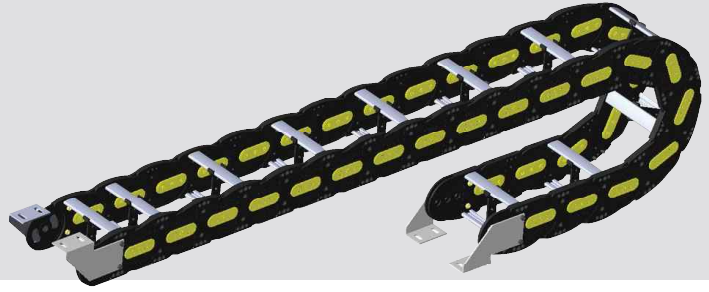


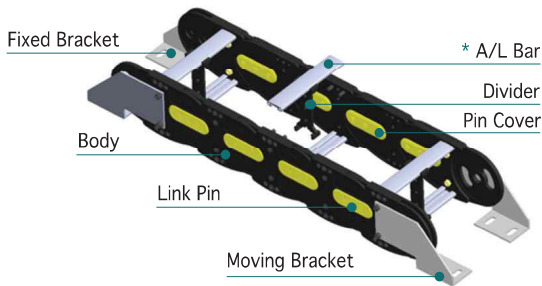
CDS150

ALUMINUM BAR TYPE

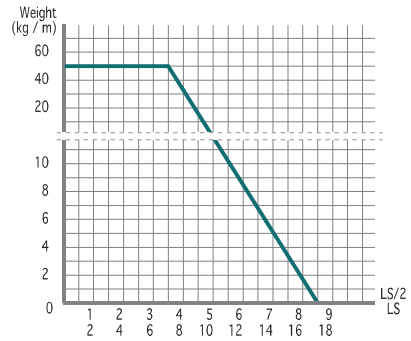
- Material : Engineering Plastic with Glass Fiber + α + Aluminum Bar
- Speed : 5 m/sec
- Temperature : -25 ~ 125°C



Structure



Load Diagrams Self-Supporting Length



* A/L Bar

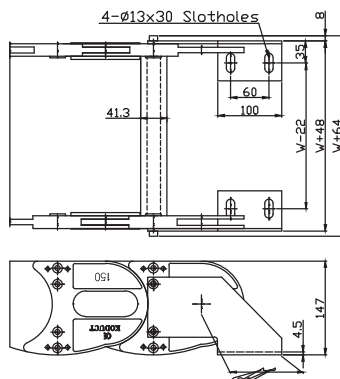
Type 1 : Standard (41.3mm)

Type 2 : 92mm

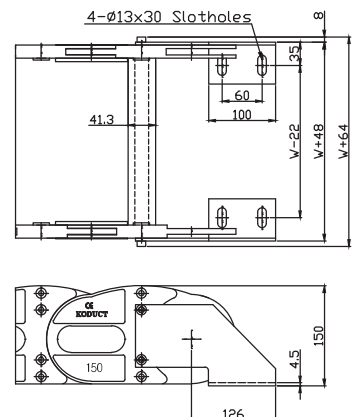


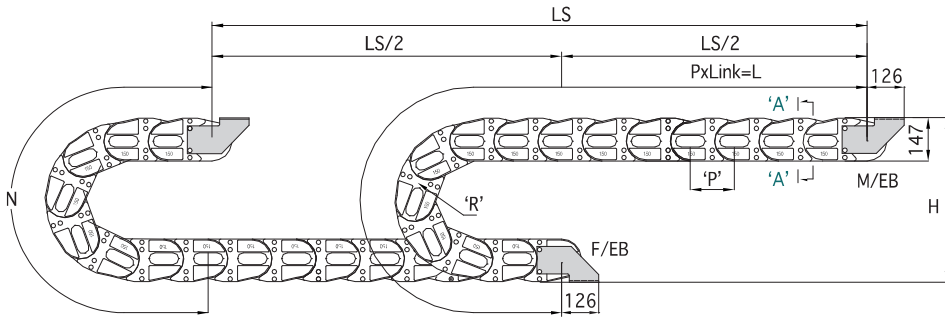
End Bracket

Fixed Bracket



Moving Bracket

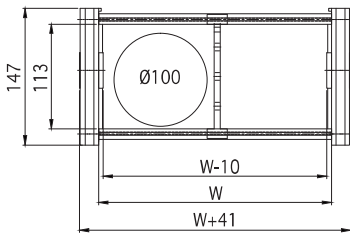




$$\left[L = \frac{LS}{2} + N \right]$$

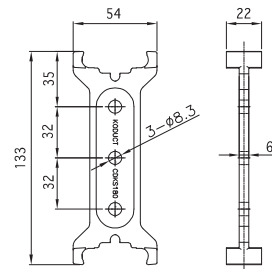
LS: Total Machine Travel, L: Length, N: Safety Length+πr,
 H: Height, P: Pitch, M/EB: Moving End Bracket, F/EB: Fixed End Bracket

Section A-A



Divider

* Separator : Ø8(Aluminum)



Specification

TYPE	W mm(inch)	Radius mm(inch)	Pitch mm	Height mm(inch)	N mm(inch)	DVDR (ea)	1M (kg)	EB Set (kg)
CDS150	200 (7.874)	200 (7.874)	150 (5.906)	560 (22.047)	1,228 (48.346)	2	7.025	3.344
	250 (9.843)			1,543 (60.748)	3	7.230		
	300 (11.811)	760 (29.921)		3	7.554			
	400 (15.748)	1,856 (73.071)		4	8.066			
	450 (17.716)	960 (37.795)		협의	9.094			
	500 (19.685)	1,160 (45.669)		협의	9.283			
	600 (23.622)	2,170 (85.433)		협의	9.866			
	700 (27.559)	1,360 (53.543)		협의	10.460			
800 (31.496)	2,484 (97.795)	협의	11.037					

* Width 주문에 따라 제작가능 (Width follows in oder)

* 1Inch = 25.4mm