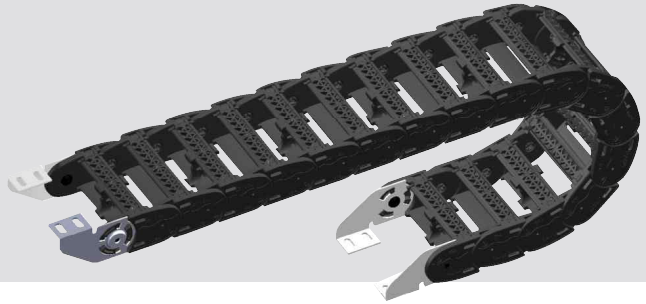


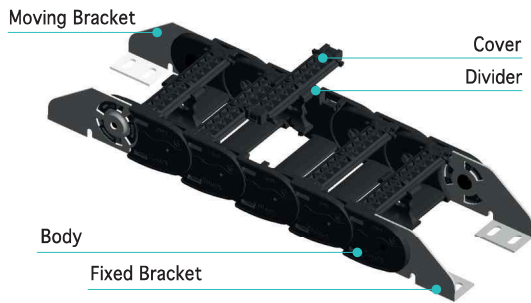
# KP50

PLASTIC COVER TYPE

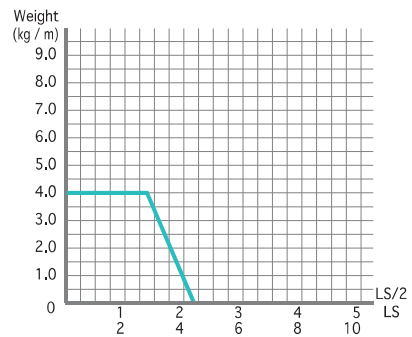
- Material : Engineering Plastic with Glass Fiber +  $\alpha$
- Speed : 3 m/sec
- Temperature : -25 ~ 125°C



## Structure



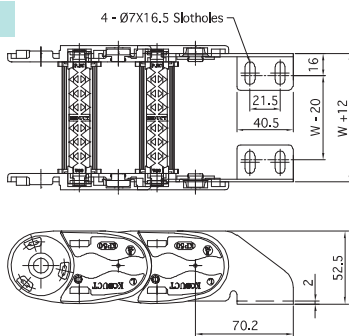
## Load Diagrams Self-Supporting Length



## End Bracket

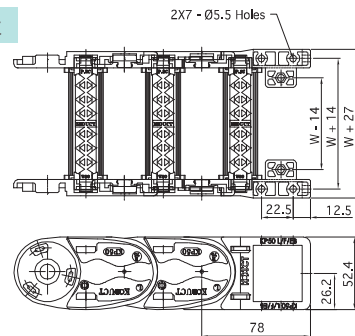
Type1: 스틸 / Steel

Fixed Bracket

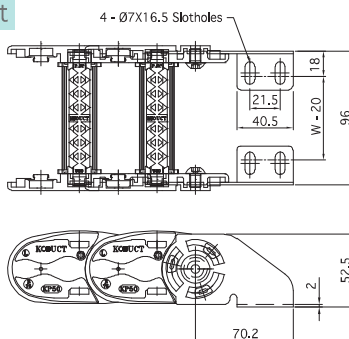


Type2 : 플라스틱 / Plastic

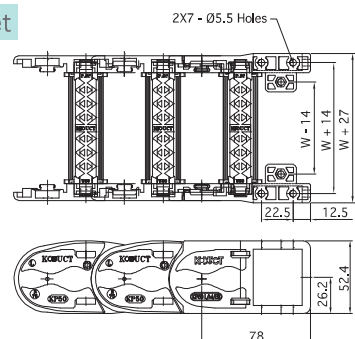
Fixed Bracket

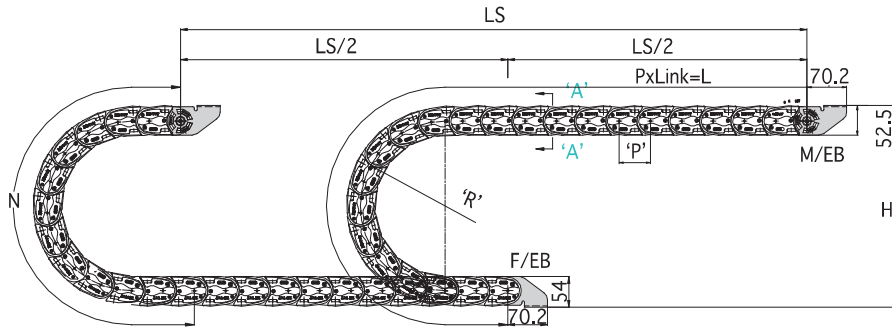


Moving Bracket



Moving Bracket

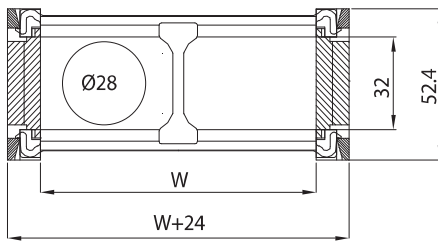




$$\left[ L = \frac{LS}{2} + N \right]$$

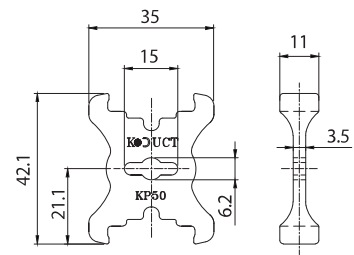
LS: Total Machine Travel, L: Length, N: Safety Length+ $\pi r$ ,  
 H: Height, P: Pitch, M/EB: Moving End Bracket, F/EB: Fixed End Bracket

Section A-A



Divider

\* Separator: Ø6(Aluminum)



Specification

TYPE	W mm(inch)	Radius mm(inch)	Pitch mm(inch)	Height mm(inch)	N mm(inch)	DVDR (ea)	1M (kg)	EB Set (kg)
KP50	40 (1.575)	60 (2.362)	55.5 (2.185)	175 (6.889)	388.4 (15.291)	0	1.456	0.254
	50 (1.969)							
	65 (2.559)							
	75 (2.952)	75 (2.952)		205 (8.070)	435.5 (17.145)	0	1.747	
	80 (3.150)							
	87 (3.425)							
	100 (3.937)	100 (3.937)		255 (10.039)	514.0 (20.236)	1	1.921	
	120 (4.724)							
	150 (5.905)							
	160 (6.299)	150 (5.905)		305 (12.007)	592.5 (23.326)	2	2.389	
	175 (6.889)							
	187 (7.362)							
200 (7.874)	200 (7.874)	455 (17.913)	828.0 (32.598)	2	3.166			
						2	3.317	

\* 1inch = 25.4mm