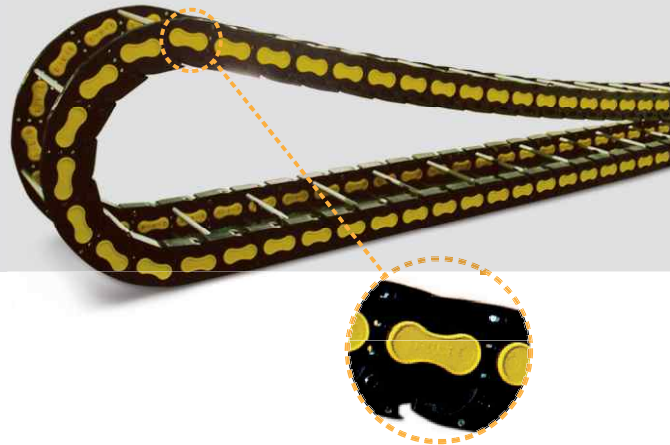


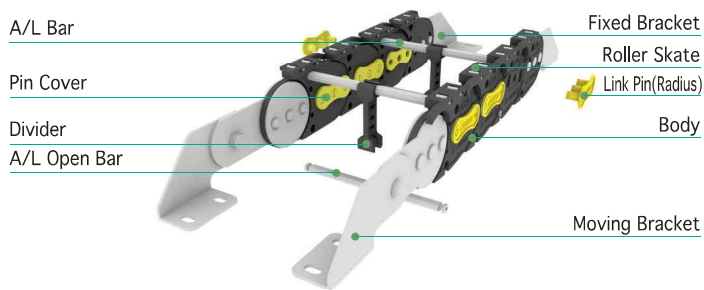
WS100

LONG DISTANCE ALUMINUM BAR TYPE

- Material : Engineering Plastic with Glass Fiber + α ,
Aluminum Bar
- Speed : 5 m/sec
- Temperature : -25 ~ 125°C

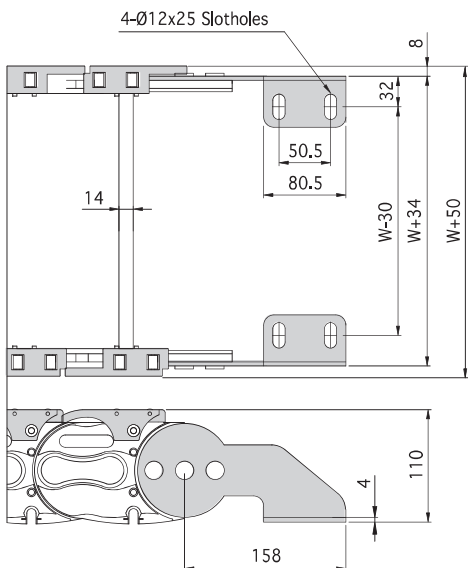


Structure

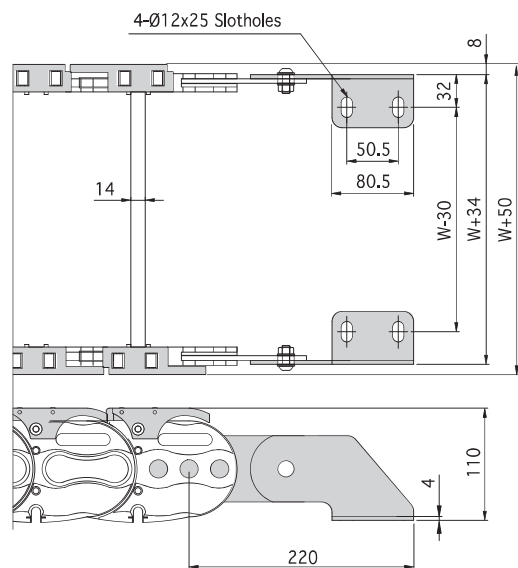


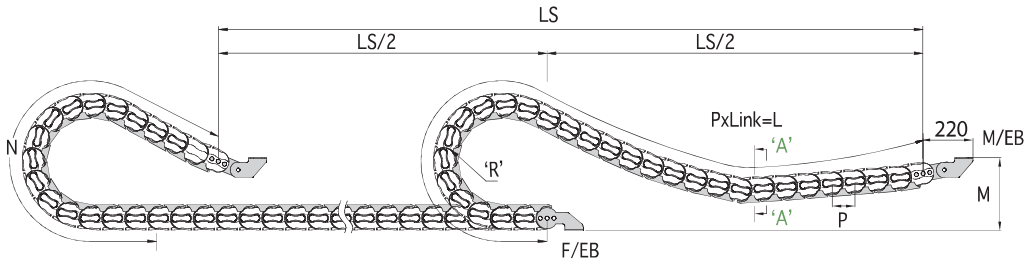
End Bracket

Fixed Bracket



Moving Bracket



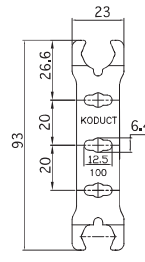
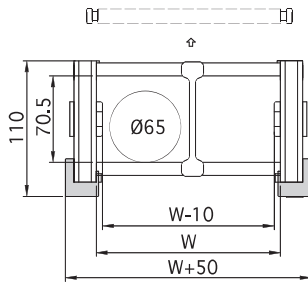


$$\left[L = \frac{LS}{2} + N \right]$$
 LS: Total Machine Travel, L: Length, N: Safety Length+ πR , M: Moving Bracket Height,
 P: Pitch, F/MB: Fixed End Bracket, M/EB: Moving End Bracket

Section A-A

Divider

* Separator : $\varnothing 6$ (Aluminum)



Specification

TYPE	W mm(inch)	Radius mm(inch)	Pitch mm(inch)	M mm(inch)	N mm(inch)	DVDR (ea)	1M (kg)	EB Set (kg)
WS100	100 (3.937)	200 (7.874)	100 (3.937)	300 (11.811)	1,200 (47.244)	1	4.567	3.633
	150 (5.906)	250 (9.843)			1,400 (55.118)	2	4.802	
	200 (7.874)				2	4.972		
	250 (9.843)	300 (11.811)			1,500 (59.055)	3	5.204	
	300 (11.811)	350 (13.780)			2,100 (82.677)	3	5.372	
	350 (13.780)				4	5.646		
	400 (15.748)	400 (15.748)			2,500 (98.425)	4	5.814	
	500 (19.685)	500 (19.685)			3,500 (137.795)	협의	7.429	
600 (23.622)	협의		7.988					

* Width 주문에 따라 제작가능 (Width follows in oder)

* 1inch = 25.4mm