

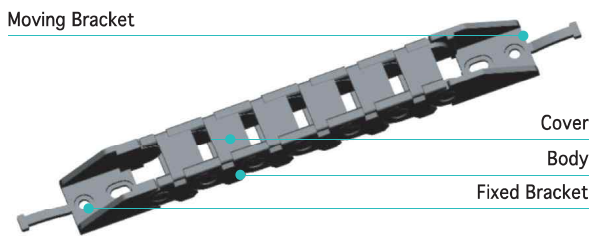
KP20

PLASTIC COVER TYPE

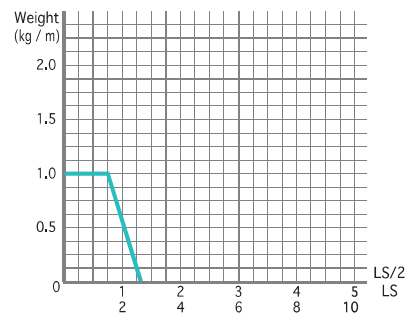
- Material : Engineering Plastic with Glass Fiber + α
- Speed : 3 m/sec
- Temperature : -25 ~ 125°C



Structure

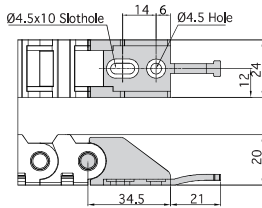


Load Diagrams Self-Supporting Length

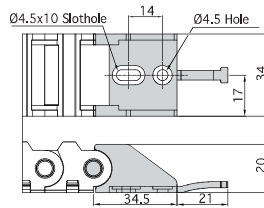


End Bracket

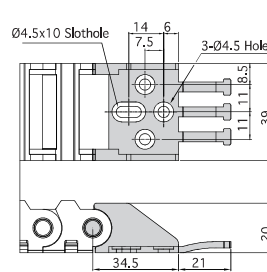
Fixed Bracket



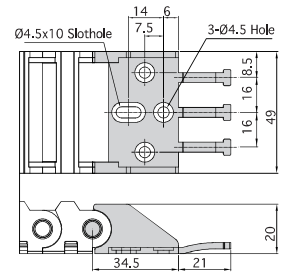
(W15)



(W25)

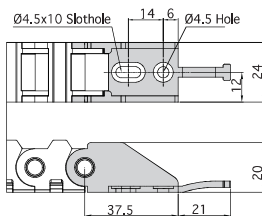


(W30)

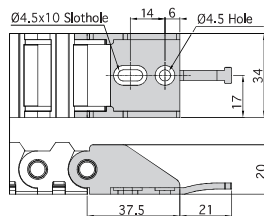


(W40)

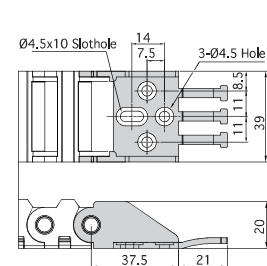
Moving Bracket



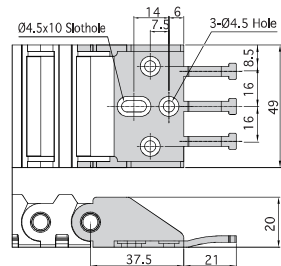
(W15)



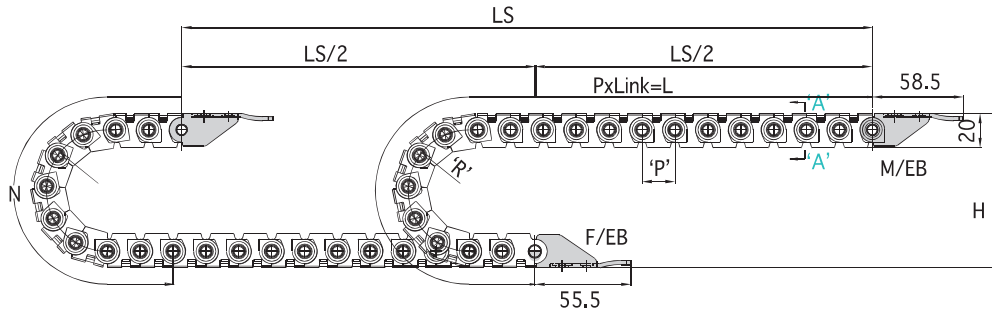
(W25)



(W30)



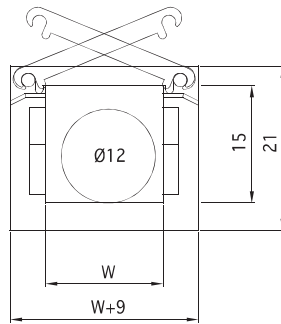
(W40)



$$\left[L = \frac{LS}{2} + N \right]$$

LS: Total Machine Travel, L: Length, N: Safety Length+ πr ,
 H: Height, P: Pitch, M/EB: Moving End Bracket, F/EB: Fixed End Bracket

Section A-A



Specification

TYPE	W mm(inch)	Radius mm(inch)	Pitch mm(inch)	Height mm(inch)	N mm(inch)	1M (kg)	EB Set (kg)
KP20	15 (0.590)	18 (0.708)	20 (0.787)	56 (2.204)	136 (5.354)	0.243	0.012
	25 (0.984)	28 (1.102)		76 (2.992)	168 (6.614)	0.284	0.013
	30 (1.181)	37 (1.456)		94 (3.700)	196 (7.716)	0.297	0.016
	40 (1.574)	50 (1.968)		120 (4.724)	237 (9.330)	0.347	0.018

* 1inch = 25.4mm