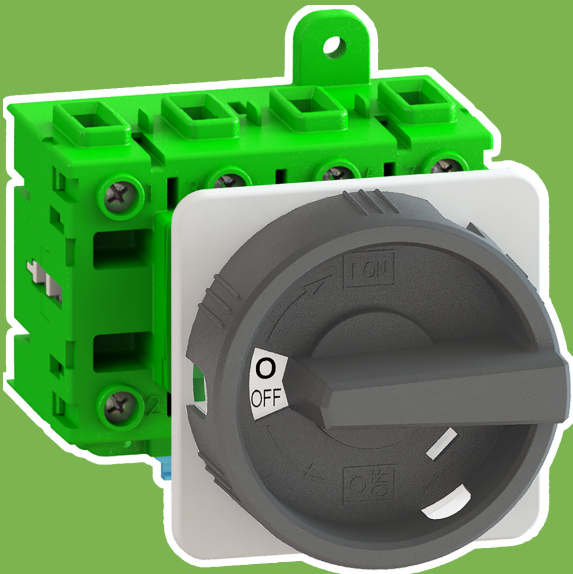


DC Switches

Solar Power Installation - Enclosed



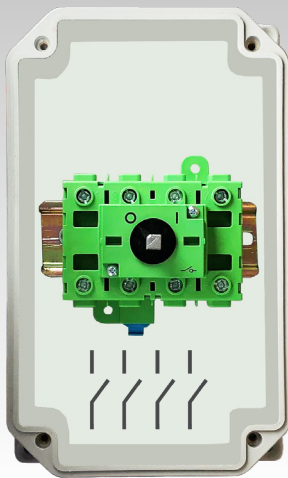
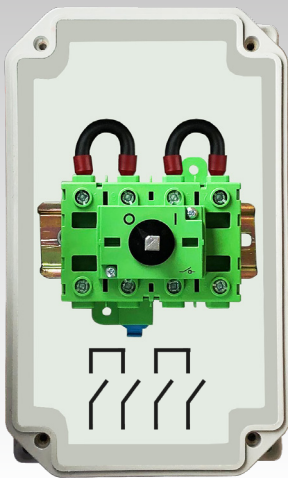
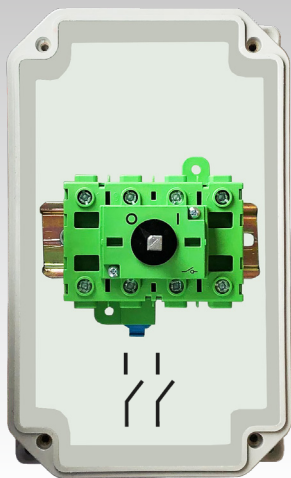
- Tested and Certified to AS 60947-3:2018 AS/NZS IEC60947.1:2015 Utilization category **DC-PV2**
- Comply with AS/NZS 5033:2014/Amdt 2:2018 *



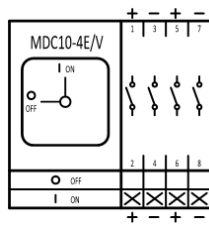
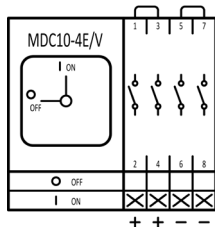
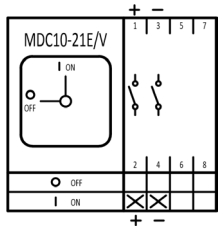
MDC10-040-1000-21
2-pole - 1 MPPT

MDC10-040-1000-41
4-pole - 1 MPPT

MDC10-040-1000-42
4-pole - 2 MPPT



switch to Quality!



Proud supplier of:



Specifications			MDC10 040-1000- 21	MDC10 040-1000- 41	MDC10 040-1000- 42
<i>acc. IEC 60947-1, IEC 60947-3, GB/T 14048-3</i>					
Rated insulation Voltage		Vdc	1500	1500	1500
	open	Adc	32	32	32
		kV	8	8	8
Rated operational voltage U_e	DC-PV2	Vdc	400	400	400
Rated operational current I_e		Adc	18	50	18
Rated operational voltage U_e	DC-PV2	Vdc	600	600	600
Rated operational current I_e		Adc	15	40	15
Rated operational voltage U_e	DC-PV2	Vdc	800	800	800
Rated operational current I_e		Adc	12	30	12
Rated operational voltage U_e	DC-PV2	Vdc	1000	1000	1000
Rated operational current I_e		Adc	9	25	9
Rated operational voltage U_e	DC-PV2	Vdc		1500	
Rated operational current I_e		Adc		15	
Rated short time withstand current I_{cw} 1sec		Adc	600	600	600
Rated short time making capacity I_{cm}		Adc	600	600	600
Terminal cross section solid or multi-stranded	min./max.	mm ²	2,5 - 10	2,5 - 10	2,5 - 10
	Finely stranded with ferrule	min./max.	mm ²	2,5 - 10	2,5 - 10
Ambient temperature		°C	+70/-25	+70/-25	+70/-25
Ambient temperature peaks up to (I_{th} 32A)		°C	+80	+80	+80
Environmental ratings					
Maximum surrounding air temperature		°C	70	70	70
Pollution degree		Cat.	3	3	3
Over voltage category		Cat.	III	III	III
Wiring ratings					
Conductor material		Cu	Cu	Cu	
Strip length		mm	12	12	12
Terminal screws		M4	M4	M4	
Torque terminal screws		Nm	1,2 - 1,4	1,2 - 1,4	1,2 - 1,4
Max. MPPT			1	1	2



- Comply with AS/NZS 5033:2014/Amdt 2:2018 *
- 2 Pole, 3-Pole, 4 Pole, 6 Pole
- Enclosed and rated IP66
- Lockout handle for 3 padlocks
- UV and weather-resistant design for outdoor use
- Certified for use on Solar Power Systems
- Available for 1 and 2 MPPT
- Stainless steel screws for enclosure cover/lid mount
- Tested and Certified to AS 60947-3:2018 AS/NZS IEC60947.1:2015 Utilization category **DC-PV2**
- Ambient temperature +70/-25 degree Celsius

* AUSTRALIAN STANDARDS: AS/NZS 5033:2014/Amdt 2:2018 – Installation and safety requirements for photovoltaic (PV)



Switch to Quality!

MERZ Schaltgeräte GmbH + CO KG
Kernerstr. 15
D - 74405 Gaildorf
Germany
www.merz-schaltgeraete.de
info@merz-schaltgeraete.de



Leveltec Engineering Pty Ltd.
41 Tate Street NSW
2422 Gloucester
Australia
www.leveltec.com.au
sales@leveltec.com.au

